

twilight

INSTRUMENTOS DE MEDICIÓN INDUSTRIAL

Medidor de espesor de marcado, TBT NT-TBTRMT1

www.twilight.mx

 / [twilightsadecv](https://www.facebook.com/twilightsadecv)

 / [twilightsadecv](https://twitter.com/twilightsadecv)

 / [twilightsadecv](https://www.youtube.com/twilightsadecv)

Marking Thickness Gauge

Model: TBTRMT-1



Operation Manual

I. Product Introduction

This handheld thickness gauge is an instrument for measuring the thickness of pavement marking, with OLED display, it can be used in both laboratory and on site. It is applicable to quality control and inspection of marking coating thickness for road maintenance units, road marking lacquer manufacturers, construction companies, quality supervision department..

Hand-held marking thickness Detector is a compact and portable instrument developed by our company. It can be used to measure the thickness of road marking in laboratory and field.

It is suitable for the quality control and inspection of the thickness of road marking by road maintenance organization, road marking paint manufacturers, construction organization, quality supervision departments and supervision organization.

II. Main features:

Small portable

All operations can be completed with one hand.

Excellent accuracy

OLED display





00 level marble calibration block

III. Technical Specification

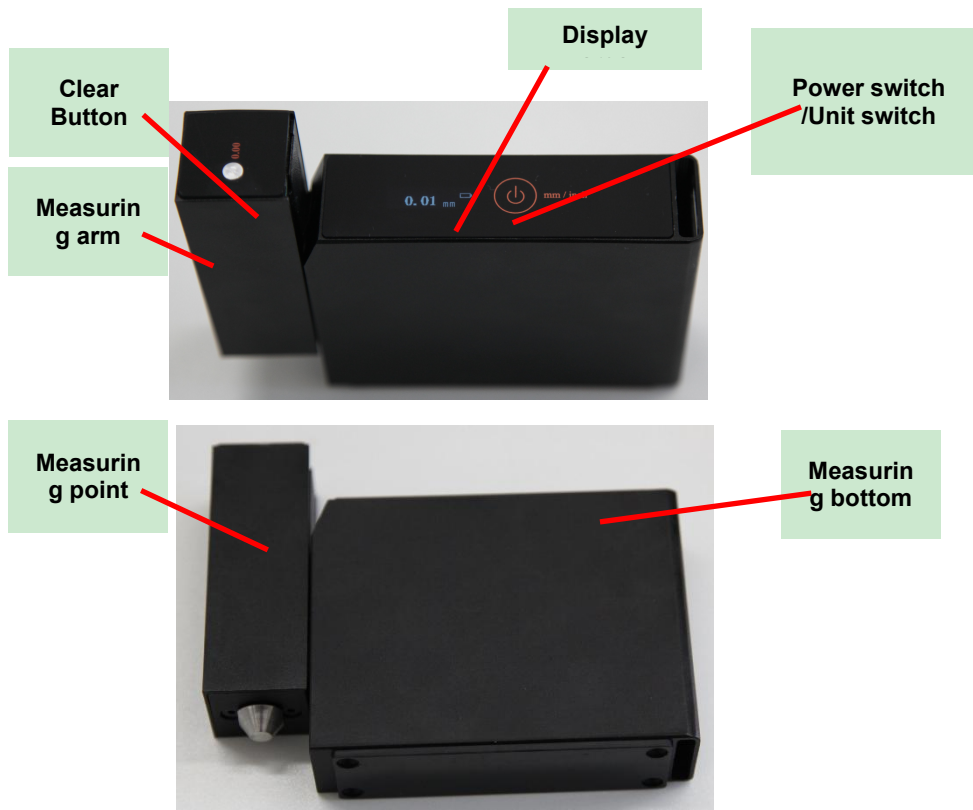
No.	Description of goods	Technical specification
1	Measuring range	+/-13mm
2	Measuring resolution	0.01mm
3	Accuracy	0.02mm
4	Calibration block accuracy	Grade 00
5	Displayer	OLED
6	Li-battery working time	>30hr continuous
7	Power supply	12V 5.2Ah
8	Working temp. & humidity	-15C ~ 60C / <98%
9	Dimension	Around 140*110*30mm



Operation guide:
System list

	Item	Quantity
	Machine	1
	Calibration block	1
	Charger	1
	Charging line	1

Machine introduce



Power switch:

Power on: Push  button more than 2 s

Power off: Push  button more than 2 s

charging:

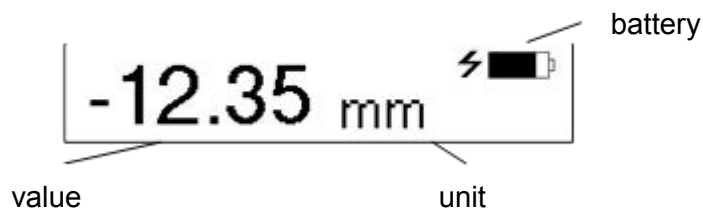
The equipment can be charged either power on or off.;

When charging in the condition of power on, there will be an charging icon on the display.

When charging in the condition of power off, the power level will be shown on the display.

Measuring:

After power on, it is shown as the following:



Before measuring, zeros need to be calibrated by calibration block, As chart, place the calibration block under the machine, push the measuring arm to the bottom, and push down the clear button, you will see 0.00^{mm} shown on the display, the calibration is finished.




1 push the measuring arm to the button



2 push down the clear button

When measuring, you can start the measurement either place the measuring bottom on the road markings or place the measuring bottom on the road, push the measuring arm to the bottom, then observe the number on the display.

You can switch the unit of display between mm and inch, by short bush(less than 1 second)  button.

Announcements

Before use this machine, you should read the user manual and operate according to this manual.

When the machine is not in use, please put it in the instrument box and place it in a cool and dry place. There should be no corrosive gas in the surrounding environment.

If there are quality problems, the machine need to be repaired and calibrated back to the factory. Users will not be responsible for dismantling the company by themselves.

If the machine is not used for a long time, it should be charged every 3 months to avoid the failure of lithium batteries.

twilight

INSTRUMENTOS DE MEDICIÓN INDUSTRIAL



LLÁMANOS

+52(81) 8115-1400 / +52 (81) 8173-4300

LADA Sin Costo:
01 800 087 43 75

E-mail:
ventas@twilight.mx

www.twilight.mx