

twilight

INSTRUMENTOS DE MEDICIÓN INDUSTRIAL

Termohigrometro PC-PRHTEMP

www.twilight.mx

 / [twightsadecv](https://www.facebook.com/twightsadecv)

 / [twightsadecv](https://twitter.com/twightsadecv)

 / [twightsadecv](https://www.youtube.com/twightsadecv)

PRHTEMP2000

PRESSURE, HUMIDITY & TEMPERATURE DATA LOGGER

W/LCD DISPLAY



Features

- Large, backlit LCD display
- Front keypad w/lock feature
- User-selectable measurement units
- Simultaneous display of temperature, humidity & pressure
- Min./max. & average statistics
- Programmable start/stop time
- Convenient status indicators
- User replaceable battery and external power
- Wall mountable
- CE Approved

Applications

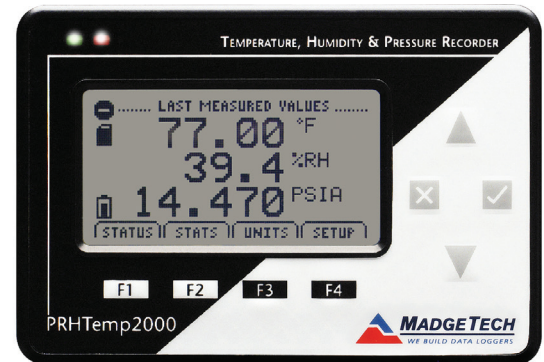
- Laboratory monitoring
- Warehouse monitoring
- Museum monitoring
- HVAC applications
- Medical and pharmaceutical facility monitoring
- Environmental studies
- HACCP program implementation
- Mineral Processing
 - Electrostatic Separation

The PRHTemp2000 is perfect for applications requiring instant remote readings of environmental parameters, including temperature, humidity and atmospheric pressure.

The 8-button keypad and large LCD provide convenient access to current data and recorder setup. Additionally, memory and battery levels, external power status, and sampling and recording status are shown on the LCD. Available on-screen data includes: statistics (*min, max, average*) for all three channels; recording status (*start, stop and recording rate*); display options (*channels shown, units, text size*); and calibration information (*date calibrated, date for recalibration*). Statistics can be cleared at any time during logging.

With 87,381 readings per channel, the PRHTemp2000 has one of the largest memory capacities of any similar data recorder on the market. The non-volatile memory will retain recorded data, even if AC and battery power are lost. The PRHTemp2000 typically runs up to one month on a user-replaceable 9 V battery. For power savings, both the LCD and backlight have configurable auto-off options. Those wanting to keep the LCD display and backlight continuously active need only to plug the unit to an AC power supply, keeping the 9 V battery connected as a back-up.

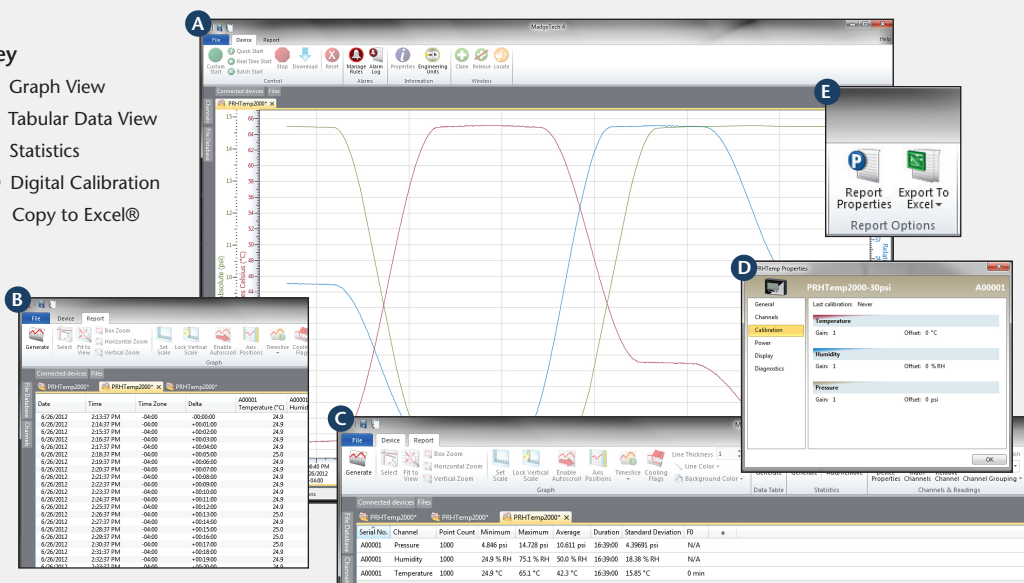
A calibration certificate is available for users needing to meet regulatory requirements. Creating permanent records, performing data calculations, and the graphing of data is quick and easy: Simply connect the interface cable to an available USB or serial port and, with a few clicks of the mouse, data is downloaded and ready for review or export to Excel®.



MADGETECH DATA LOGGER SOFTWARE

Key

- A** Graph View
- B** Tabular Data View
- C** Statistics
- D** Digital Calibration
- E** Copy to Excel®



Software Features:

- Multiple graph overlay
- Statistics
- Digital calibration
- Zoom in/ zoom out
- Lethality equations (F0, PU)
- Mean Kinetic Temperature
- Full time zone support
- Data annotation
- Min./Max./Average lines
- Data table view
- Automatic report generation
- Summary view
- Multilingual

PRHTEMP2000 SPECIFICATIONS*

*SPECIFICATIONS ARE SUBJECT TO CHANGE WITHOUT NOTICE. SPECIFIC WARRANTY REMEDY LIMITATIONS APPLY. CALL 1-603-456-2011 OR GO TO WWW.MADGETECH.COM FOR DETAILS.

TEMPERATURE

Range:	-20 °C to +60 °C
Resolution:	0.1 °C
Calibrated Accuracy:	±0.5 °C (0 °C to +50 °C)

HUMIDITY

Range:	0 %RH to 95 %RH
Resolution:	0.1 %RH
Calibrated Accuracy:	±3 %RH (±2 %RH typical at 25 °C)
Specified Accuracy Range:	+10 °C to +40 °C, 10 %RH to 80 %RH

PRESSURE

Range:	0 PSIA to 30 PSIA
Resolution:	0.002 PSIA
Calibrated Accuracy:	1 %FSR; 0.2 % at 25 °C

DOT-MATRIX LCD

Dimensions:	2.5 in x 1.375 in (63 mm x 35 mm)
Text:	Configurable channel text size
Indicators:	Power, status, memory
Backlight:	Configurable w/auto shut-off and contrast adjustment

BATTERY WARNING: MAY LEAK AND/OR FLAME IF OPENED, RECHARGED, CONNECTED IMPROPERLY, OR DISPOSED OF IN FIRE.

Start/Stop Time:	Software programmable start time and date, up to six months in advance; programmable stop time
Memory:	87,381 readings per channel; 262,143 total readings; software configurable memory wrap
Reading Rate:	1 reading every 2 seconds up to 1 reading every 24 hours
Calibration:	Digital calibration through software
Calibration Date:	Automatically recorded within device
Battery Type:	9V lithium battery included, user replaceable ; optional AC adapter
Battery Life:	1 year battery life at 1 min reading rate with display off. 30 days typical with continuous LCD and no backlight usage.
Unit Display:	Date and time stamped °C, °F, K, °R; %RH, mg/ml water vapor concentration, dew point; PSIA, inHg, mmHg, bar, mbar, atm, Torr, Pa, hPa, kPa, MPa, inH2O, ftH2O, mH2O, ft alt, m alt
Time Accuracy:	±1 minute/month (at 20 °C to 30 °C)
Computer Interface:	PC serial or USB (interface cable required); 115,200 baud
Software:	XP SP3/Vista/Windows 7/Windows 8
Operating Environment:	-20 °C to +60 °C, 0 %RH to 95 %RH non-condensing
Dimensions:	4.8 in x 3.3 in x 1.25 in (122 mm x 84 mm x 32 mm)
Weight:	16 oz (440 g)
Enclosure:	Black anodized aluminum
Approvals:	CE Approved

ORDERING INFORMATION

MODEL	DESCRIPTION
PRHTEMP2000	Pressure, Humidity and Temperature Recorder w/LCD Display
IFC200	Software, manual and USB interface cable
Calibration Certificate	Calibration Certificate available for data logger
U9VL-J	Replacement battery for PRHTemp2000

ASK ABOUT OUR OTHER DATA LOGGERS

- Temperature
- Humidity
- Pressure
- pH
- Level
- Shock
- LCD Display
- Pulse/Event/State
- Current
- Voltage
- Wireless
- Intrinsically Safe
- Spectral Vibration
- Motion

For Quantity Discounts call 603-456-2011 or email sales@madgetech.com

twilight

INSTRUMENTOS DE MEDICIÓN INDUSTRIAL



LLÁMANOS

+52(81) 8115-1400 / +52 (81) 8173-4300

LADA Sin Costo:
01 800 087 43 75

E-mail:
ventas@twilight.mx

www.twilight.mx



/ [twightsadecv](https://www.facebook.com/twightsadecv)



/ [twightsadecv](https://twitter.com/twightsadecv)



/ [twightsadecv](https://www.youtube.com/twightsadecv)