

# twilight

INSTRUMENTOS DE MEDICIÓN INDUSTRIAL

## Cámara Termografica Básica

### GS-T120

[www.twilight.mx](http://www.twilight.mx)

 / [twilightsadecv](https://www.facebook.com/twilightsadecv)

 / [twilightsadecv](https://twitter.com/twilightsadecv)

 / [twilightsadecv](https://www.youtube.com/twilightsadecv)

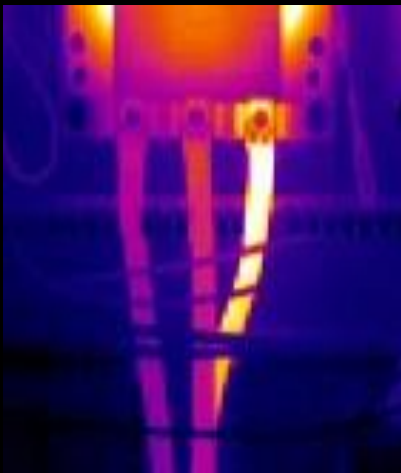
# T Series

## Entry-level Portable Thermal Camera



Building Diagnostics  
HVAC Inspection  
Facilities maintenance  
Electrical Application

T120 Series Entry-level Thermal Image Camera is an affordable temperature measuring tool widely used for building diagnostics, HVAC inspections, electrical system inspections and more. It perfectly overcomes the shortcomings of the single spot infrared thermometers and helps work smarter, safer and faster. Equipped with Guide's self-developed 120x90 WLP IR modules, T120 series thermal cameras can display radiometric data of 10,800 pixels instantly which helps quickly detect large areas and pinpoint fault spots accurately. It can also easily save images and data, and download fast via USB, removable TF card or WIFI.



- **Boot-up in 1 second**  
Boot up and display fully radiometric image instantly  
Full screen max & min temperature alarm
- **2.4 inch Large Display**  
240x320 pixel Color LCD
- **Good-handle Buttons**  
Ergonomic design  
Easy to operate even wear the gloves
- **8-hour Battery Life**  
Low power consumption,  
Large capacity battery
- **2-hour Quick Charge**  
USB Type-C Interface  
High power quick charge
- **IR/Visible/Laser Indicator**  
Pinpoint targets precisely
- **Trigger Button**  
Trigger button for photo taking
- **Rugged Design**  
2-meter Drop Test, IP54 Encapsulation

# Specifications

| Model                                   | T120   | T120V                             |
|---|--|-----------------------------------|
| <b>IR image &amp; Optical</b>           |  |                                   |
| IR Resolution                           | 120×90@17μm  |                                   |
| Detector type                           | VOx/7.5~14μm   |                                   |
| Frame Rate                              | 25HZ/9HZ   |                                   |
| Thermal Sensitivity / NETD              | 60 mk  |                                   |
| Focal Length                            | 2.28mm/F1.13   |                                   |
| Field of view(FOV)                      | 50°×38°  |                                   |
| Spatial Resolution(IFOV)                | 7.6 mrad   |                                   |
| Focus                                   | Focus-free   |                                   |
| <b>Visible Camera</b>                   |  |                                   |
| Visible Camera Resolution               | N/A  | 320×240, Focus-free               |
| Flashlight                              | N/A  | Yes                               |
| <b>Image Display</b>                    |  |                                   |
| Display                                 | 2.4 inch IPS technology TFT display  |                                   |
| Display Resolution                      | 320×240  |                                   |
| Image Model                             | IR image   | IR/Visible/Picture-in-picture     |
| Color Palettes                          | 6:White Hot, Iron Red, Hot Iron, Arctic, Rainbow 1, Rainbow 2  |                                   |
| <b>Temperature Measurement</b>          |  |                                   |
| Temperature Range                       | -20°C-150°C, 100°C-400°C ( Auto switching )  |                                   |
| Accuracy                                | ±2°C or ±2%, whichever is greater<br>( target temp ≥0°C, ambient temp is 15°C ~ 30°C )               |                                   |
| Measurement Spot                        | Center spot  |                                   |
| Measurement Area                        | 3(incl. max & min temp)  |                                   |
| Auto Hot & Cold Spot Tracking           | Yes  |                                   |
| Alarm                                   | Full Screen Max & Min Spot Alarm   |                                   |
| <b>Image Storage</b>                    |  |                                   |
| Storage Media                           | TF card ( Standard 16G, up to 32G)   |                                   |
| IR Image Format                         | Full Radiometric (JPG) (120 x 90)  |                                   |
| Visible Image                           | N/A  | Yes, 320 x 240                    |
| <b>Connections &amp; Communications</b> |  |                                   |
| USB                                     | TYPE-C、TF Card slot  |                                   |
| Laser                                   | Yes  |                                   |
| Tripod interface                        | Yes  |                                   |
| WIFI                                    | N/A  | Yes, image transmission available |
| Mobile APP                              | N/A  | Yes                               |
| PC IR Analysis Software                 | Yes  |                                   |
| <b>Power System</b>                     |  |                                   |
| Battery Tpye                            | Rechargeable Li ion battery  |                                   |
| Battery Operating Time                  | > 8 hours  | > 5 hours                         |
| Charging Time                           | Internal charge , ≤2.5 hours   |                                   |
| <b>Environmental Parameters</b>         |  |                                   |
| Operating Temperature                   | -10°C~50°C   |                                   |
| Storage Temperature                     | -40°C~70°C   |                                   |
| Encapsulation                           | IP54 , 2-meter drop test   |                                   |
| Certification                           | CE/ROHS/FCC  |                                   |
| Weight                                  | about 350g   |                                   |
| Size                                    | 194mm*61.5mm*76mm  |                                   |
| Standard Accessories                    | Charger + Adapter, TYPE-C USB cable, Wrist Strap, Quick start Guide, Data Download Card, 16G TF Card |                                   |

# twilight

INSTRUMENTOS DE MEDICIÓN INDUSTRIAL



LLÁMANOS

+52(81) 8115-1400 / +52 (81) 8173-4300

LADA Sin Costo:  
01 800 087 43 75

E-mail:  
[ventas@twilight.mx](mailto:ventas@twilight.mx)

[www.twilight.mx](http://www.twilight.mx)



/ [twightsadecv](https://www.facebook.com/twightsadecv)



/ [twightsadecv](https://twitter.com/twightsadecv)



/ [twightsadecv](https://www.youtube.com/twightsadecv)