

twilight

INSTRUMENTOS DE MEDICIÓN INDUSTRIAL

Kit de Inspección PosiTector 6000

www.twilight.mx



/ twilightSadecv

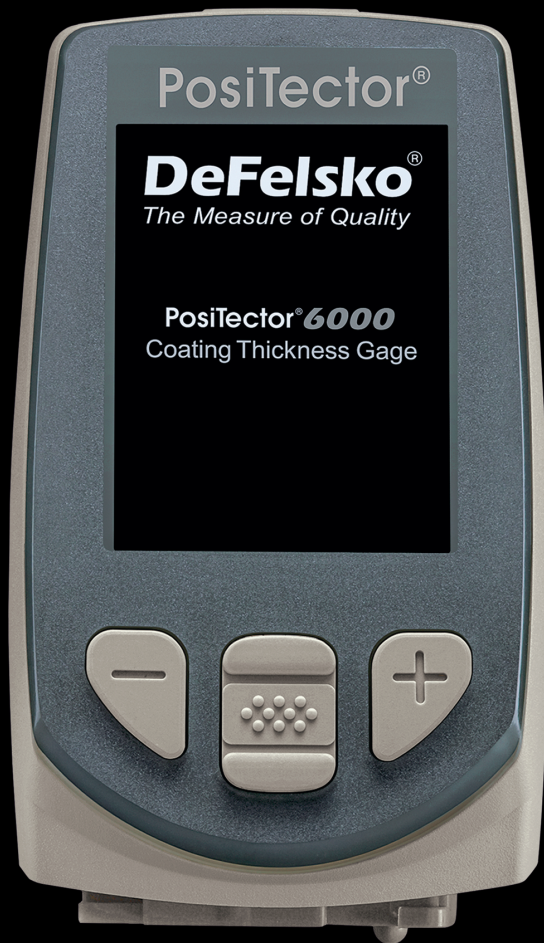


/ twilightSadecv



/ twilightSadecv

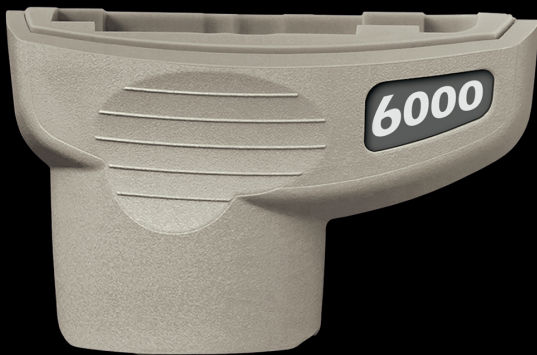
PosiTector® Inspection Kits



Each Inspection Kit contains:

- PosiTector Gage Body – Standard or Advanced
- PosiTector **6000** Coating Thickness Probe – select from a variety of measurement ranges and probe styles
- PosiTector **DPM** Environmental Probe
- PosiTector **SPG** Surface Profile Probe

Customize your own from our wide selection of gage bodies and probes



KITF3 Shown

Select Standard or Advanced Features

for a complete comparison visit www.defelsko.com/kits/kit_features.htm

PosiTector body accepts all PosiTector 6000, 200, RTR, SPG, DPM, SST, SHD and UTG probes easily converting from a coating thickness gage to a surface profile gage, dew point meter, soluble salt tester, Shore hardness durometer or ultrasonic wall thickness gage



KIT3 Shown

Standard Model Inspection Kits

Each Standard Kit contains the **PosiTector Standard** gage body and 3 probes – coating thickness, environmental and surface profile.

Coating Thickness with Standard models

- Storage of 250 readings per probe—stored readings can be viewed or downloaded

Environmental Monitoring with Standard models

- Storage of 2,500 datasets (RH, Ta, Ts, Td, Ts-Td). Stored readings can be viewed or downloaded.
- Auto Log Mode runs unattended on batteries for up to 50 hours or continuously via USB

Surface Profile with Standard Models

- Storage of 250 readings per probe—stored readings can be viewed or downloaded

Advanced Model Inspection Kits

Each Advanced Kit contains the **PosiTector Advanced** gage body and 3 probes – coating thickness, environmental and surface profile.

Features include:

- Onscreen Batch Annotation—add notes, change batch names and more with built-in QWERTY keyboard
- Live graphing of measurement data
- WiFi technology wirelessly synchronizes with PosiSoft.net and downloads software updates
- Bluetooth® 4.0 Technology** for data transfer to a mobile device running the PosiTector App or optional portable printer. **BLE API** available for integration into third-party software.

Coating Thickness with Advanced models

- Storage of 100,000 readings in up to 1,000 batches and sub-batches.
- 3 Scan Modes — increase measurement speed to 180+ readings per minute
 - Normal** – take continuous readings without lifting the probe
 - NEW Statistics** – take continuous readings and record average, standard deviation, min/max thickness and number of readings while scanning
 - NEW Limited Count Average** – take continuous readings up to a user-specified count. Gage displays and records the average of the readings.
- Multiple stored calibration adjustments for measuring on a variety of substrate conditions
- SSPC-PA 2 feature determines if film thickness over a large area conforms to user-specified min/max levels

Environmental Monitoring with Advanced models

- Storage of 100,000 datasets in up to 1,000 batches.
- NEW** Enhanced Auto Log mode turns the gage off between readings for up to 8 months of battery life. Each reading can be uploaded to PosiSoft.net or an FTP server using WiFi. Automatically group readings into batches at daily, weekly, or monthly intervals
- User defined limits for all parameters—visible and audible warnings
- NEW** Send email alerts when connected to WiFi
- Wet bulb temperature can be displayed and recorded
- Trend Charts graph readings in real-time

Surface Profile with Advanced models

- Storage of 100,000 readings in up to 1,000 batches and sub-batches.
- SmartBatch™ allows entry of user-defined parameters and criteria to comply with various standards and test methods

Each pre-configured inspection kit contains

- PosiTector Gage Body – Standard or Advanced
- PosiTector 6000 Coating Thickness Probe –select from a variety of measurement ranges and probe styles
- PosiTector DPM Environmental Probe
- PosiTector SPG Surface Profile Probe

Ordering Guide

Inspection Kit	PosiTector Body	Coating Thickness Probe
KITF1	Standard	6000-F
KITFS1		6000-FS
KITFT1		6000-FT
KITFTS1		6000-FTS
KITFN1		6000-FN
KITFNS1		6000-FNS
KITF3	Advanced	6000-F
KITFS3		6000-FS
KITFT3		6000-FT
KITFTS3		6000-FTS
KITFN3		6000-FN
KITFNS3		6000-FNS

Kits come complete with a gage body (Standard or Advanced), coating thickness probe (user selected), environmental probe, surface profile probe, precision plastic shims, glass zero plate and metal shim, protective rubber holster with belt clip, wrist strap, 3 AAA alkaline batteries, 3 instruction manuals, hard shell case, protective lens shield, 3 Long Form Certificates of Calibration traceable to NIST, USB cable and 2 year warranty on gage body and probes.

Case Size: 30 cm (l) x 25 cm (w) x 10 cm (d) **Weight:** 1.3 kg (2.8 lbs.)
12" (l) x 10" (w) x 4" (d)

Custom Inspection Kits

Build your own Inspection Kit from a selection of gage bodies and probes to suit your needs.

Award Winning Compatibility!

- Coating Thickness
- Surface Profile
- Environmental Conditions
- Shore Hardness
- Salt Contamination
- Ultrasonic Wall Thickness



PosiSoft® Suite of Software

Four FREE and unique ways to view and report your PosiTector and PosiTest data

PosiSoft Desktop — PC/Mac

Powerful desktop software for downloading, viewing, printing and storing measurement data. No internet connection required.

- Import readings directly from the gage via USB or from legacy PosiSoft desktop versions
- Synchronize measurement data including readings, notes and pictures to and from PosiSoft.net
- Import/Export Templates and Jobs to share with other users
- **NEW** Import PDF forms and overlay **Custom Fields** for automatic population of inspection and measurement data
- Report preview automatically refreshes as changes are made



PosiSoft.net — Web-based

A web-based application offering secure centralized management of readings. Access your data from any web-connected device.

- Synchronize data when connected via USB or WiFi
- Synchronize measurement data including readings, notes and pictures with PosiSoft Desktop and PosiTector App
- Securely store measurement data in the cloud and share with authorized users via a secure login



Jobs Batches Readings

PosiTector App — Mobile

Mobile app connects PosiTector Advanced instruments, the PosiTector SmartLink and the PosiTest AT-A to your *iOS* or *Android* smart device.

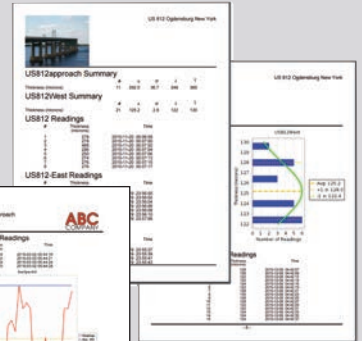
- Auto pairing Bluetooth BLE connection
- Automatically generate user-formatted reports and share via email, text, cloud storage services like Dropbox, and more
- Export readings to PosiSoft Desktop or synchronize readings to and from PosiSoft.net for further reporting and archival options



PosiSoft Custom PDF Report Generator

Easily create reports from your measurement data in seconds.

featured on
PosiSoft Desktop
PosiSoft.net
PosiTector App

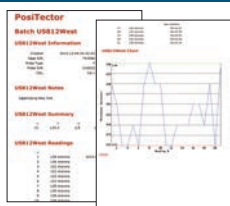


- Include inspection information such as on-site pictures, screen captures, notes and more to communicate important details
- Create and save multiple custom layouts as templates – insert cover pages, add logos/images, and select font and point size
- Select the information to include for each product type – charts, histograms, readings, time stamps and more
- Compile multi-batch reports from one or more probes and instrument types
- Export readings as comma separated value (.CSV) files which can easily be imported into Excel and other supporting applications



Jobs feature consolidates batches into groups to keep measurement data organized and to quickly create multi-batch reports (not available on PosiTector App)

PosiSoft USB Drive — Gage Based



A simple gage interface to retrieve data in a manner similar to USB flash drives, cameras, or digital audio players. No software to install or internet connection required.

- View and print readings and graphs using universal PC/Mac web browsers and file explorers
- Measurement data can be printed quickly from a formatted HTML report or exported in .CSV format for further analysis in spreadsheets
- Simple file management - Copy and paste measurement data from the PosiTector to a local folder on your computer, network folder or cloud drive
- Access stored screen captures (snapshots) of the PosiTector display

twilight

INSTRUMENTOS DE MEDICIÓN INDUSTRIAL



LLÁMANOS

+52(81) 8115-1400 / +52 (81) 8173-4300

LADA Sin Costo:
01 800 087 43 75

E-mail:
ventas@twilight.mx

www.twilight.mx



/ [twightsadecv](https://www.facebook.com/twightsadecv)



/ [twightsadecv](https://twitter.com/twightsadecv)



/ [twightsadecv](https://www.youtube.com/twightsadecv)